



Beautifully warm

Electric infrared radiant heating is practical, functional, efficient, and eco-friendly. If you're looking for a discreet heating solution that can be used both indoors and outdoors, in large open spaces or under covered areas, then look no further. Heatscope's space-saving, sleek designs are ideal for homes, restaurants, cafes, or wherever an effective, unobtrusive heating solution is needed.



Award-winning Design

Delivers pleasant heat without the distraction. Clean-cut, modern designs and colors easily blend into any decor.



Fast Heating

Noticeable heat within milliseconds and 100% heat within 15-60 seconds.



Weather-resistant

All models are certified with an IP rating for protection against dust, splash-water, and wind.



No Aggressive Red Light

Produces a very ambient, modest light based on double carbon heating elements.



High efficiency

Up to 94% of the energy used is turned into ambient heat and transferred directly to nearby people and surfaces for maximum efficiency.

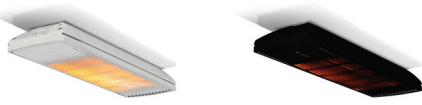
Spot 1600W & 2800W

Powerful infrared carbon heaters

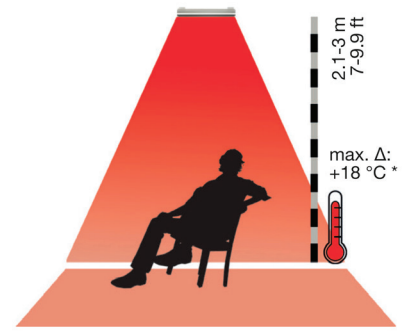
Features

- Reaches full heat within 15 seconds
- Reduced ambient light emission
- High performance heater, smallest size
- Two heat options - 100% or 50%
- Available in ceramic white or black powder-coat finish
- TUV Listed to UL standards

HEATSCOPE® Spot 1600W

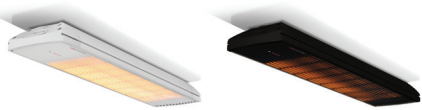


- Heat Output** 1600W / 5,460 BTU/h
Size (L W H) 670 x 184 x 78 mm / 26.4 x 7.2 x 3.1 in
IP Rating IP24
Application Semi-open, well covered spaces and windy locations.

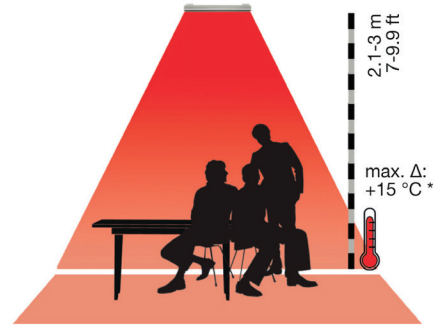


2.9 x 2.3 m / 9.5 x 7.5 ft

HEATSCOPE® Spot 2800W



- Heat Output** 2800W / 9,555 BTU/h
Size (L W H) 884 x 184 x 78 mm / 34.8 x 7.2 x 3.1 in
IP Rating IP24
Application Semi-open, well covered spaces and windy locations.



3.2 x 2.5 m / 10.4 x 8.2 ft

Pure 3000W

Slim line ambient light infrared carbon heater

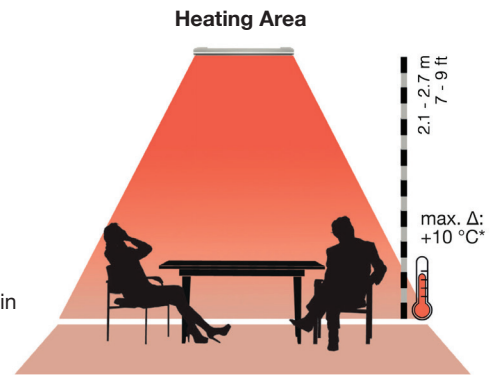
Features

- Reaches full heat within 20 seconds
- Fitted with a convex SCHOTT NEXTEMA® glass front, that spreads warmth evenly across an area
- Available in ceramic white or black powder-coat finish
- Two heat options - 100% or 50%
- Single bracket for easier installation
- Can be installed horizontally or vertically
- Award-winning design (RedDot Design Award, 2018)
- TUV Listed to UL standards

HEATSCOPE® Pure 2400W



- Heat Output** 3000W / 10,236 BTU/h
Size (L W H) 1044 x 166 x 87 mm / 41.1 x 6.5 x 3.4 in
IP Rating IP65
Application All outdoor and indoor spaces, no cover needed.



3.9 x 2.8 m / 12.8 x 9.2 ft

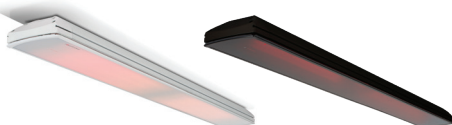
Vision 3200W

Premium ambient light infrared carbon heater

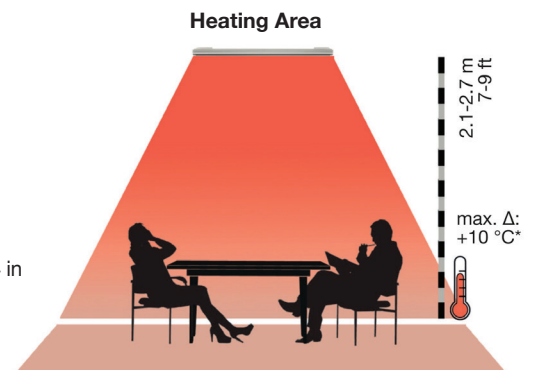
Features

- Reaches full heat within 60 seconds
- High performance industrial glass screen reduces light to a minimum
- Longest heater with 1.6 metres in length
- Two heat options - 100% or 50%
- Available in ceramic white or black powder-coat finish
- TUV Listed to UL standards

HEATSCOPE® Vision 3200W



- Heat Output** 3200W / 10,920 BTU/h
Size (L W H) 1660 x 184 x 87 mm / 65.4 x 7.2 x 3.4 in
IP Rating IP24
Application Semi-open, well covered spaces (roof or canopy).



4.3 x 2.5 m / 14.1 x 8.2 ft

MAD Design USA / 5875 Green Valley Circle, Suite 100, Culver City, CA 90230
T +1 (888) 590.3335 E info@mad-usa.com

heatscopeheaters.com